

ASUS WL-330gE Setup

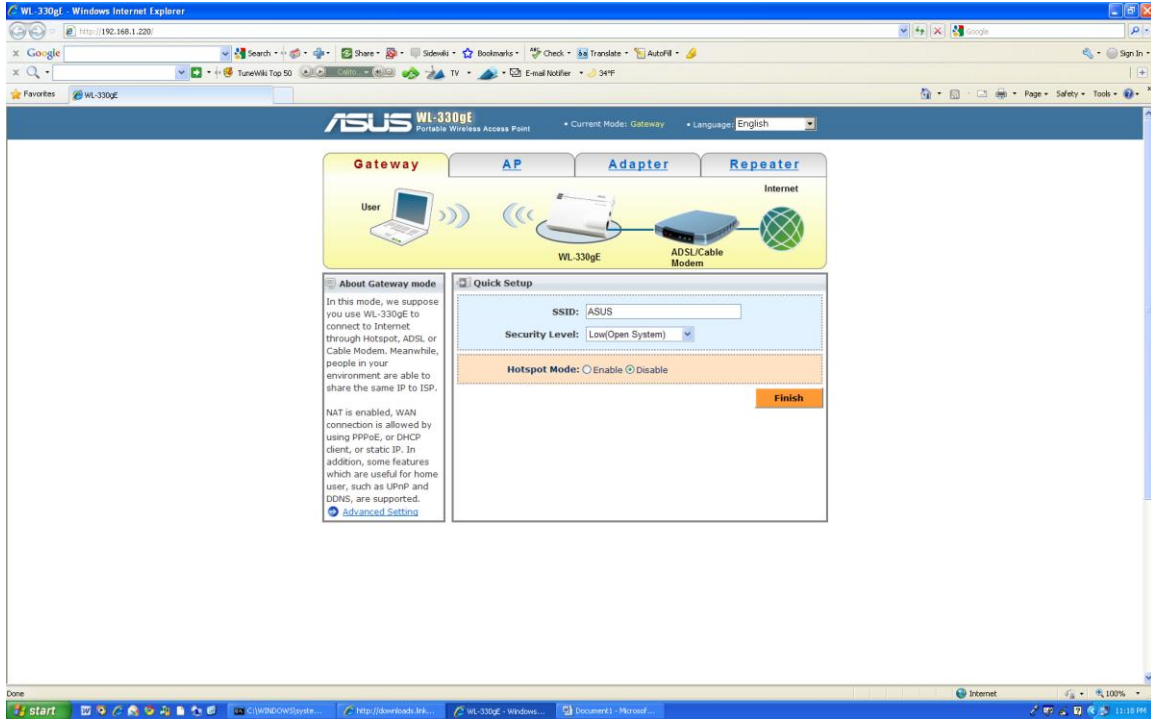
Jason at NSS reserved MAC Addresses for Robots and ASUS Bridges:

- 1463EB1
 - ASUS Bridge
 - MAC: E0-CB-4E-5D-E6-EA
 - IP: 172.18.63.1
 - Robot:
 - MAC:00-80-2f-11-e0-29
 - IP: 172.18.63.0
 - Name: ese-robot-1463eb1.wufi.wustl.edu
- 14BCCCCF
 - ASUS Bridge
 - MAC: E0-CB-4E-1B-95-1A
 - IP: 172.18.63.3
 - Robot
 - MAC: 00:80:2f:11:f6:c4
 - IP: 172.18.63.2
 - Name: ese-robot-14BCCCCF.wufi.wustl.edu
- 148CCCC1
 - ASUS Bridge
 - MAC: E0-CB-4E-5D-E2-50
 - IP: 172.18.63.5
 - Robot
 - MAC: 00:80:2f:11:f6:b6
 - IP: 172.18.63.4
 - Name: ese-robot-.wufi.wustl.edu
- 1463EAB
 - ASUS Bridge
 - MAC: E0-CB-4E-5D-E2-EB
 - IP: 172.18.63.7
 - Robot
 - MAC: 00:80:2f:11:e0:21
 - IP: 172.18.63.6
 - Name: ese-robot-1463EAB.wufi.wustl.edu
- 14BCCCC5
 - ASUS Bridge
 - MAC: E0-CB-4E-5D-E2-10
 - IP: 172.18.63.9
 - Robot
 - MAC: 00:80:2f:11:f6:ba
 - IP: 172.18.63.8
 - Name: ese-robot-14BCCCC5.wufi.wustl.edu
- 159F5BE
 - ASUS Bridge

- MAC: F4-6D-04-94-EB-22
 - IP: 172.18.63.11
 - SN: 4739
 - Robot
 - MAC: 00:80:2f:12:B8:67
 - IP: 172.18.63.10
 - Name: ese-robot-159F5BE.wufi.wustl.edu
- Spare
 - ASUS Bridge
 - MAC: F4-6D-04-94-EB-16
 - IP: 172.18.63.13
 - SN: 4750
 - Robot

Configuration Instructions for WUFI

1. Reset device by holding the reset button for 10 seconds. Then turn off for 10 seconds and plug Ethernet cable into PC and turn on.



2. Browse to 192.168.1.220
 - a. Username: admin
 - b. Password: admin

The screenshot shows the ASUS WL-330gE web interface in Microsoft Internet Explorer. The browser address bar shows `http://192.168.1.220/Wizard_Adapter.asp`. The page title is "ASUS WL-330gE Portable Wireless Access Point". The current mode is set to "Gateway", and the language is "English".

The main content area features four tabs: "Gateway", "AP", "Adapter", and "Repeater". The "Adapter" tab is selected and highlighted in yellow. Below the tabs is a diagram illustrating the connection between a User, the WL-330gE device, an AP, and the Internet.

Below the diagram, there are two sections: "About Adapter mode" and "Quick Setup".

About Adapter mode

In this mode, WL-330gE acts as a wireless network adapter connecting to WLAN. Your devices can connect to WLAN through the Ethernet port of WL-330gE.

[Advanced Setting](#)

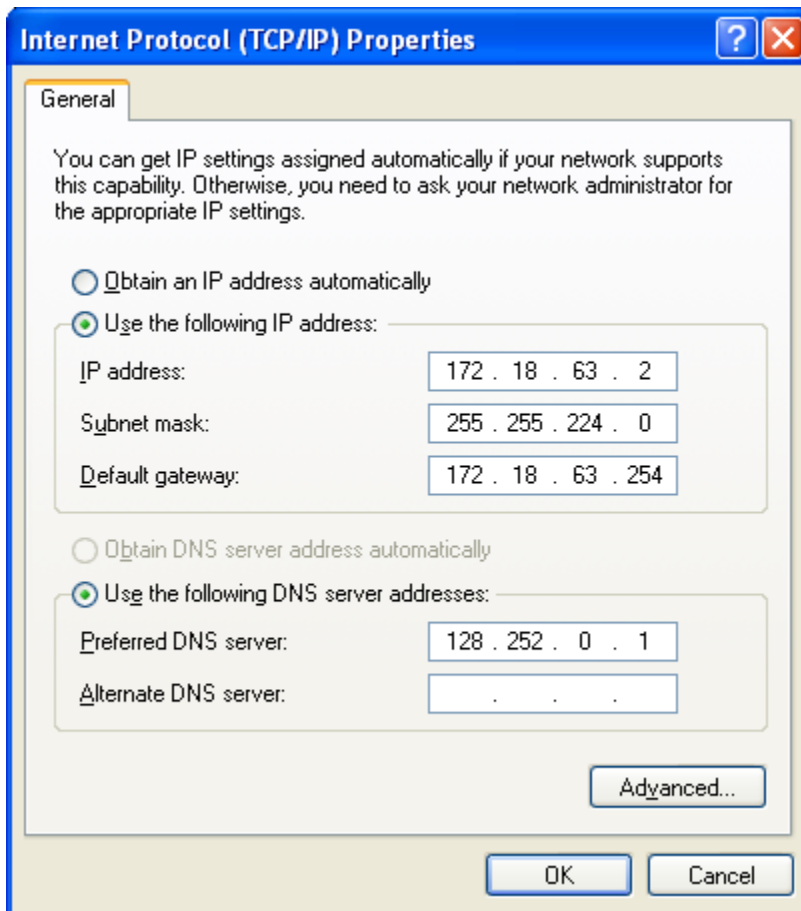
Quick Setup

Available Network List

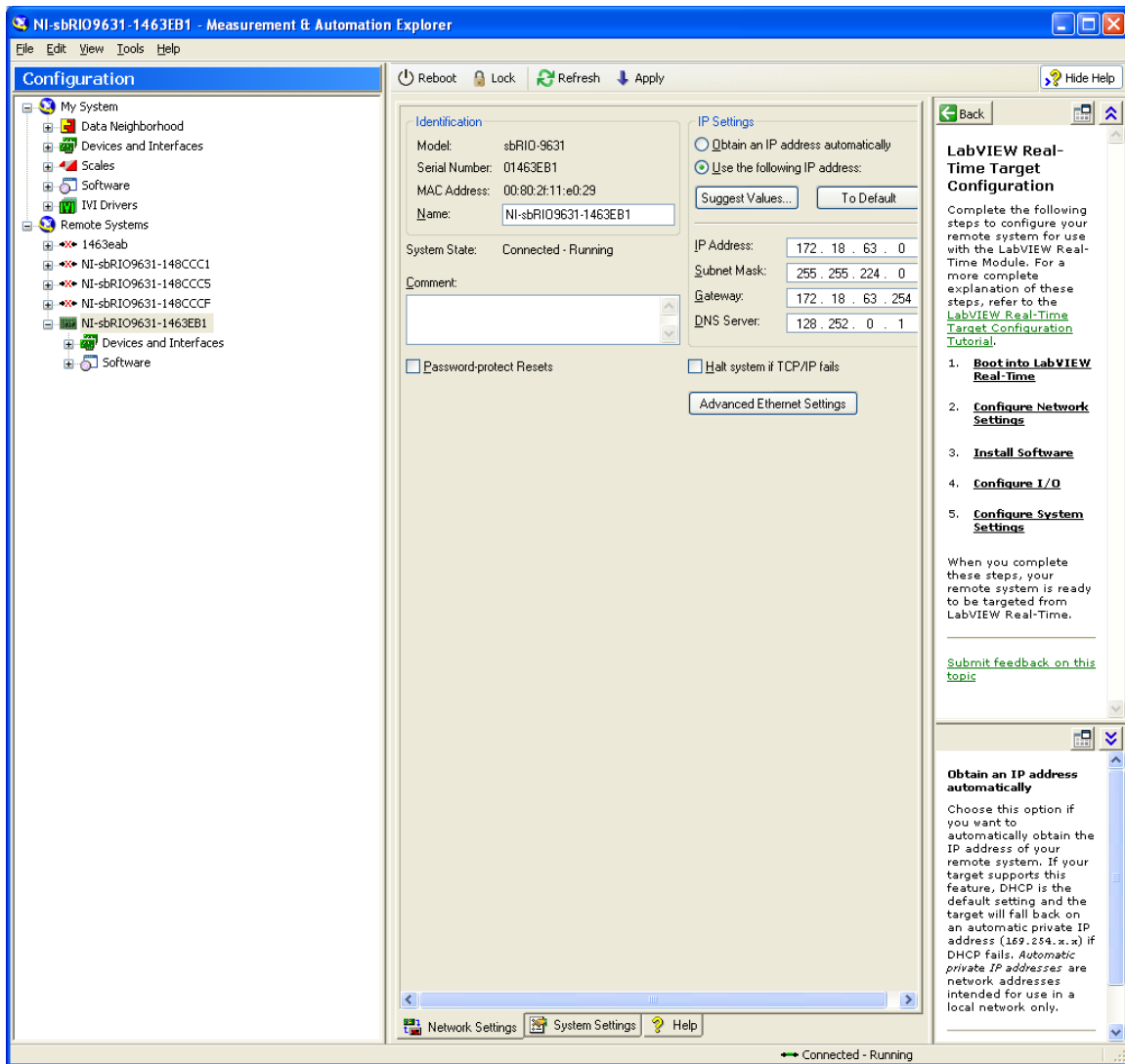
SSID	Channel	Authentication	Signal	Status
<input type="radio"/> GUESTWIFI-WUSTL	6		████████	
<input type="radio"/> WUFI	6		████████	
<input checked="" type="radio"/> wunoreg	6		████████	
<input type="radio"/> WUFI-S	6	WPA / 802.1X	███████	
<input type="radio"/> wucon wireless	6	WEP	███████	
<input type="radio"/> LAW-S	6	WPA / 802.1X	███████	

Buttons: Add, Connect, Refresh

3. Select wunoreg and click on Connect. You will lose the connection to the ASUS at this point. The MAC addresses are in the QIP tables, so the IP will be automatically assigned according to the table above.

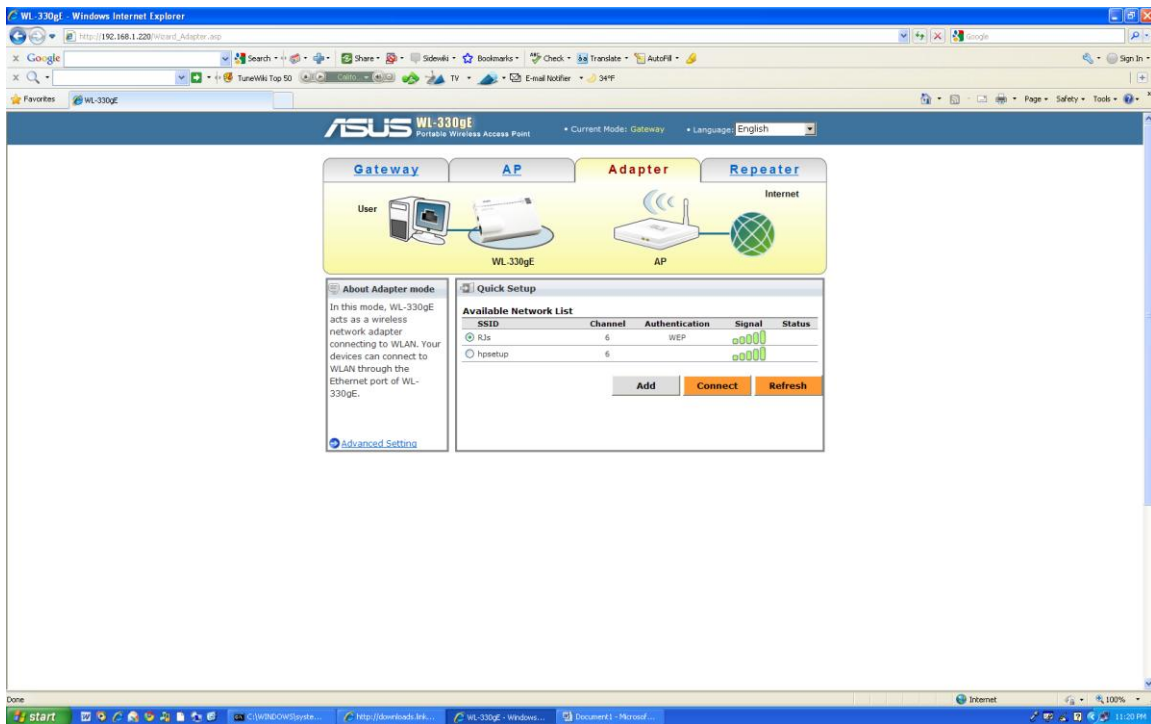


4. To test, change the network settings – Use the IP of the robot you are going to connect the bridge to. Make sure it is off the network.

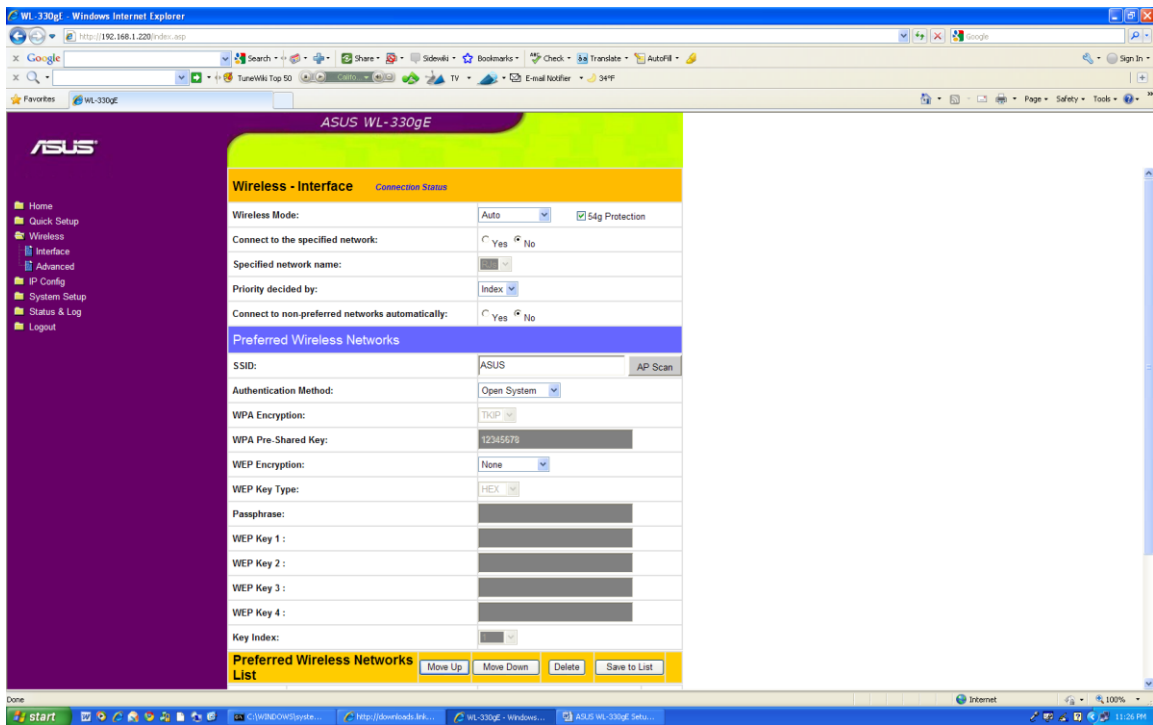


5. Now configure the robot to use the IP from the table above. If you do not know the IP of the robot, then you need to reset the IP. Do this by turning ON (Down) DipSwitch -3 and pressing the Reset switch. Then hit refresh in MAX.

Configuration Instructions for WEP Wireless Network



1. Click on the Adapter tab, select the SSID and Click Connect. Enter the WEP password if prompted. However, this doesn't seem to work so you have to add it again on the Advanced Settings page.



2. Click on Advanced -> Wireless -> Interface. Click on AP Scan

WL-330gE Web Manager - Windows Internet Explorer

http://192.168.1.220/Advanced_WirelessAPScanPre_Content.asp

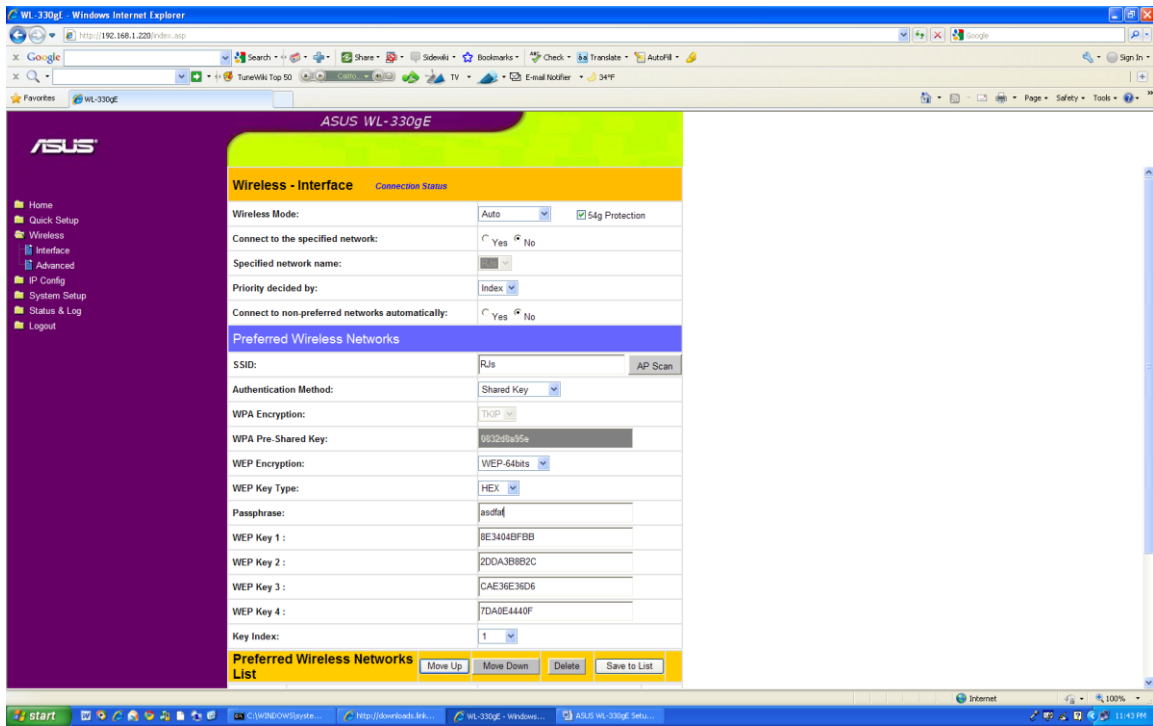
AP Scan Results

Refresh Close

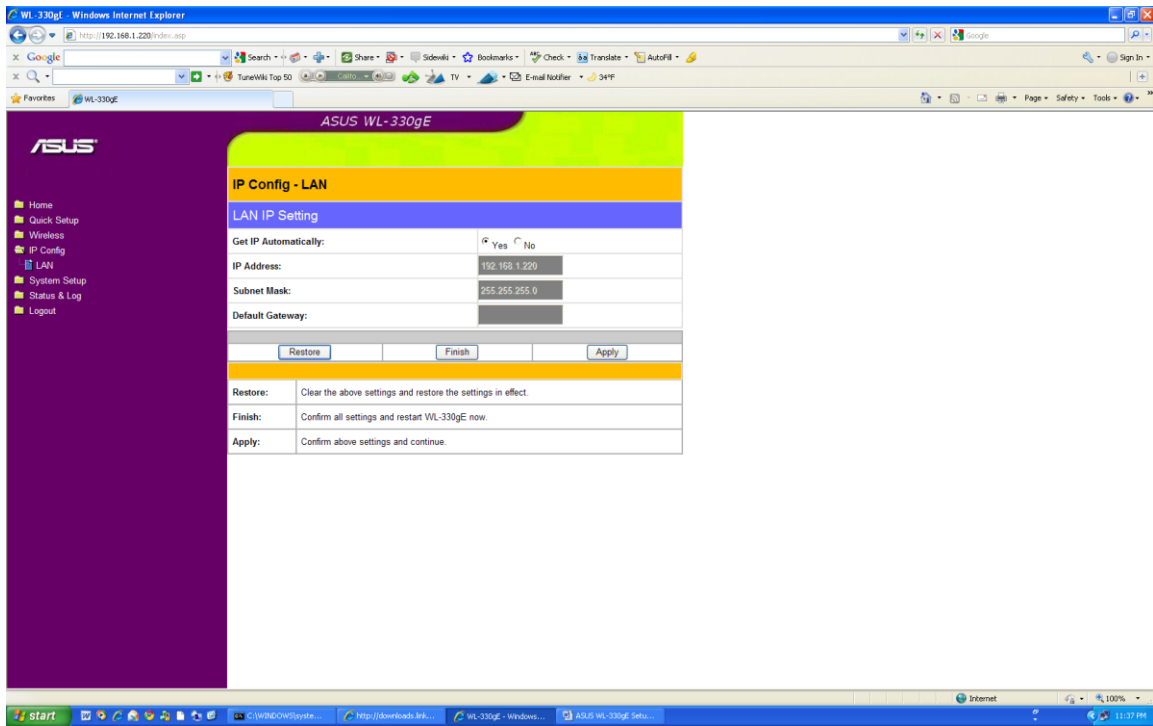
BSSID	SSID	Authentication	Channel	Signal
00:1E:E5:01:CD:97	RJs <input type="button" value="Select"/>	WEP	6	-62 dBm

Done Internet 100%

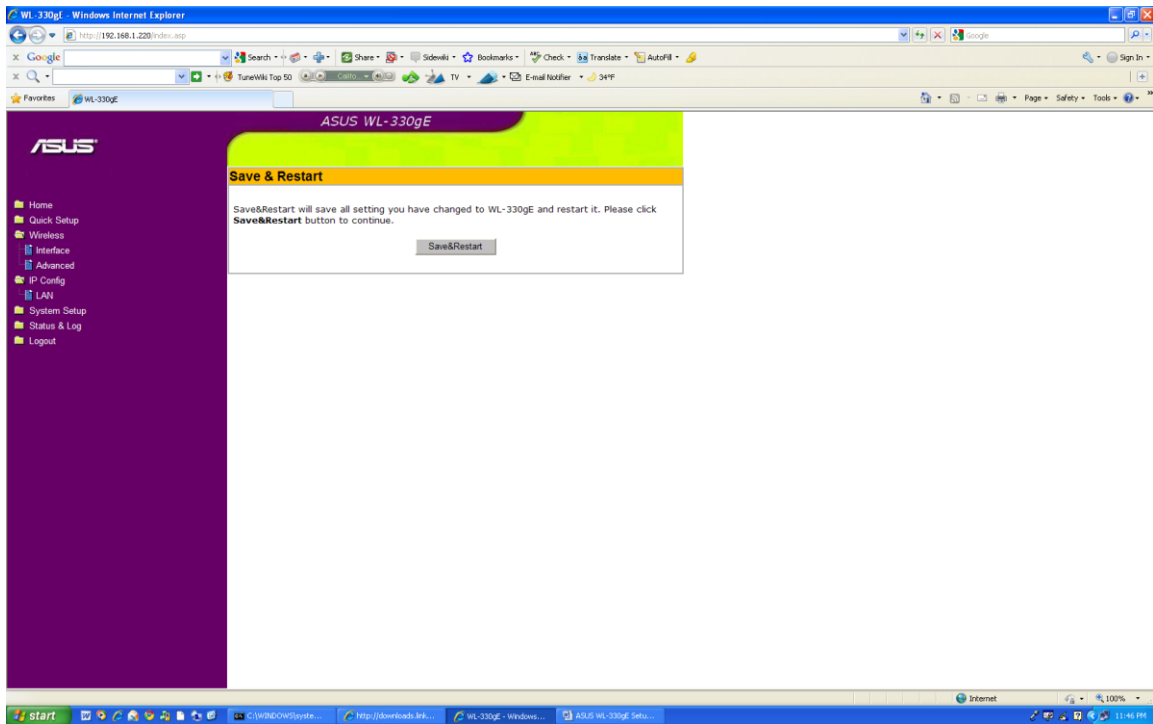
3. Click Select for the correct SSID.



4. Enter either passphrase or WEP key directly and click Save to List and Apply.



5. Click on IP Config -> LAN and check Get IP Automatically and Finish.



6. Click Save & Restart. After it gets to 100% it starts clicking. Unplug the adapter for 10 seconds and plug it back in.

```
C:\WINDOWS\system32\cmd.exe
Connection-specific DNS Suffix . . :
Autoconfiguration IP Address. . . : 169.254.18.31
Subnet Mask . . . . . : 255.255.0.0
Default Gateway . . . . . :

C:\Documents and Settings\Richter-Jacobs>ipconfig

Windows IP Configuration

Ethernet adapter Local Area Connection:

    Connection-specific DNS Suffix . . :
    IP Address. . . . . : 192.168.2.105
    Subnet Mask . . . . . : 255.255.255.0
    Default Gateway . . . . . : 192.168.2.1

Ethernet adapter Local Area Connection 5:

    Connection-specific DNS Suffix . . :
    Autoconfiguration IP Address. . . : 169.254.18.31
    Subnet Mask . . . . . : 255.255.0.0
    Default Gateway . . . . . :

C:\Documents and Settings\Richter-Jacobs>
```

7. Check and make sure that the adapter pulls a valid DHCP IP.
8. When you plug it into the sbRIO, make sure you cycle power on the sbRIO – otherwise it doesn't go out and get a new IP.