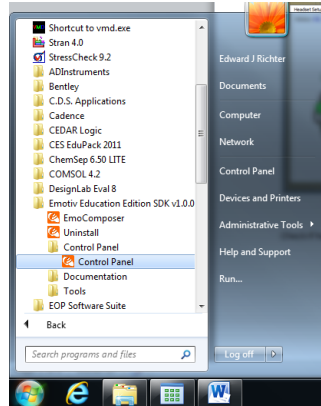


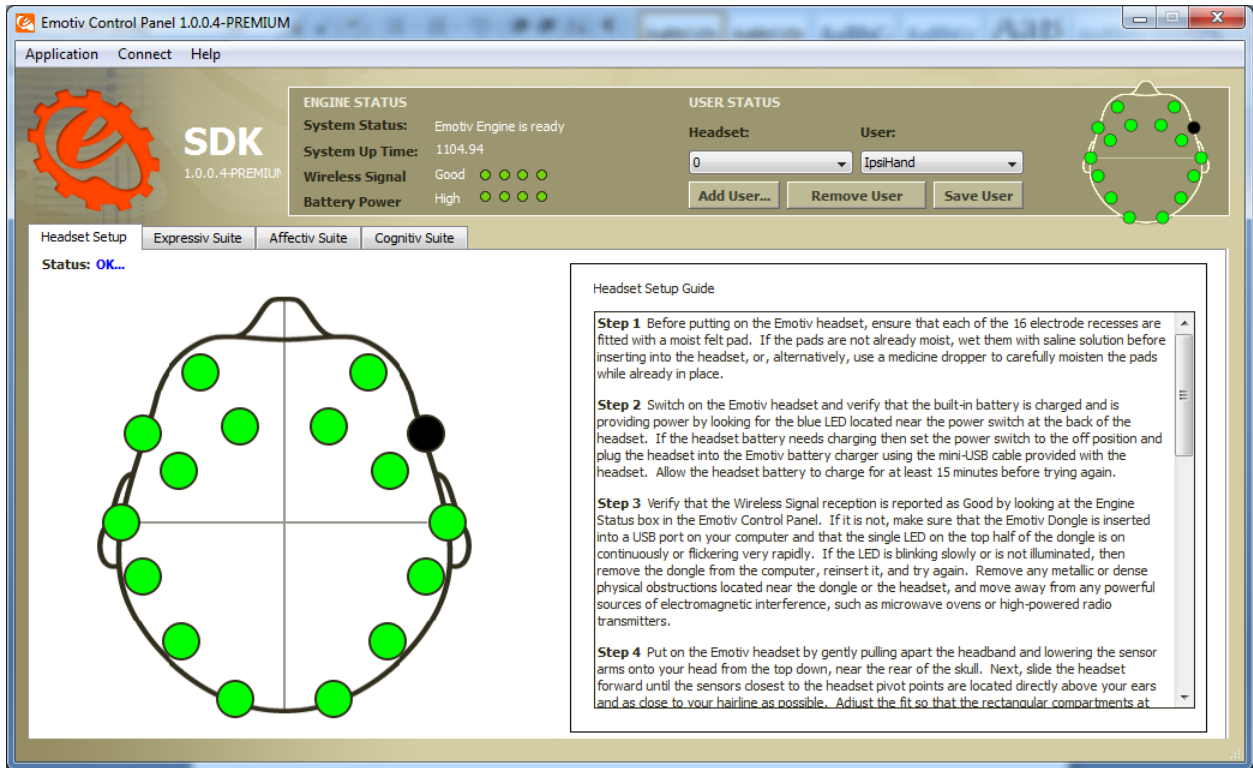
BCI Stimulus Presentation Instructions

(Installation Instructions)

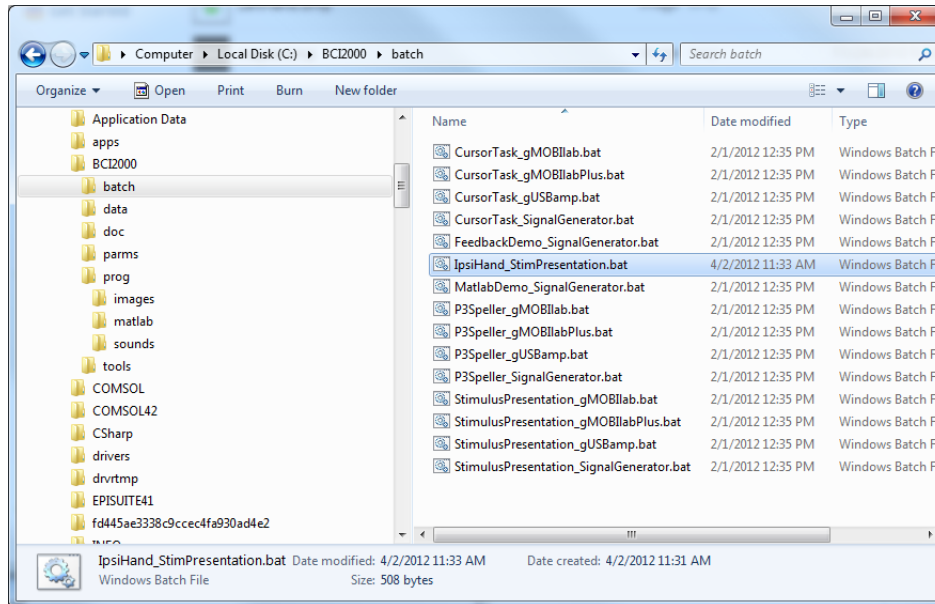
1. Headset is in Locker 98. Use Saline solution on each electrode. Make sure you plug in the USB receiver.



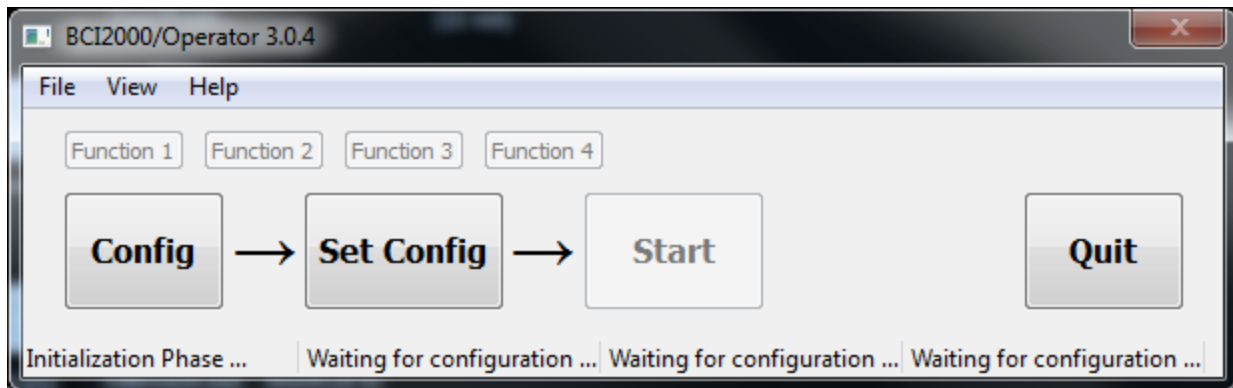
2. Launch Emotiv Control Panel at Start -> All Programs -> Engineering -> Emotiv Education Edition SDK v1.0.0.4-PREMIUM_Bryan316 -> Control Panel -> Control Panel or browse to "C:\Program Files (x86)\Emotiv Education Edition SDK_v1.0.0.4-PREMIUM\EmotivControlPanel.exe"



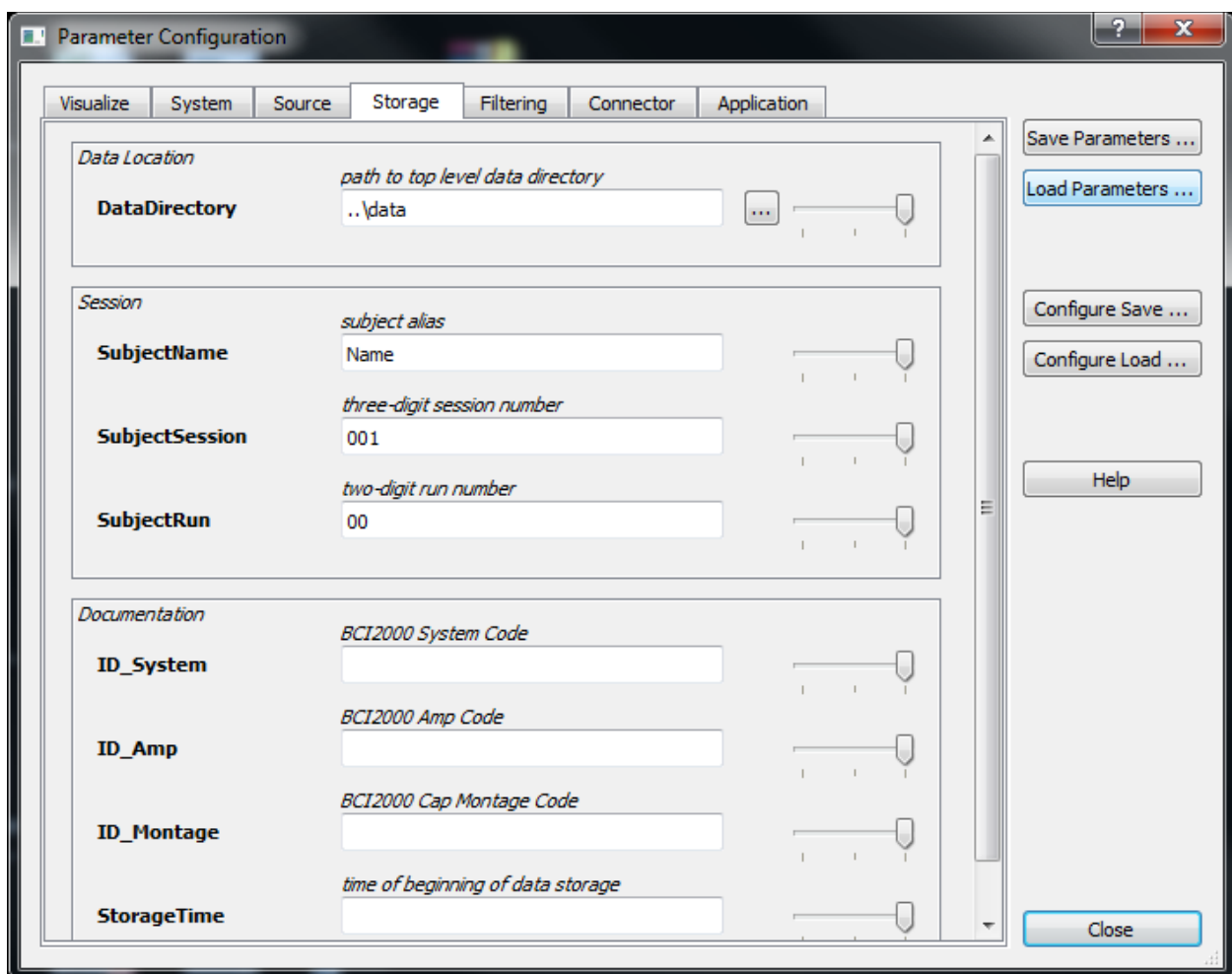
3. Check if head set is connected. All green is good.



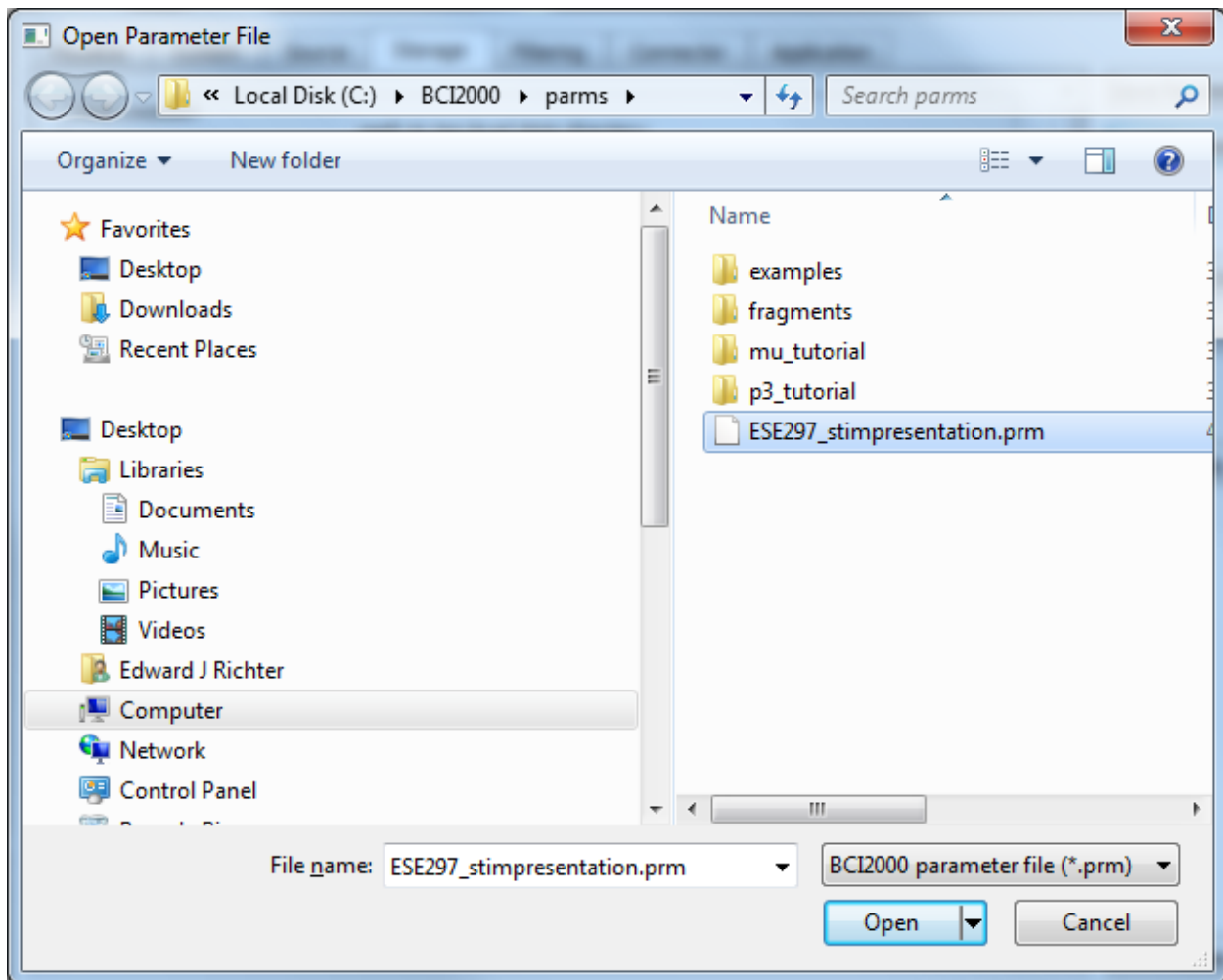
4. Browse to C:\BCI2000\batch and double-click on IpsiHand_StimPresentation.bat



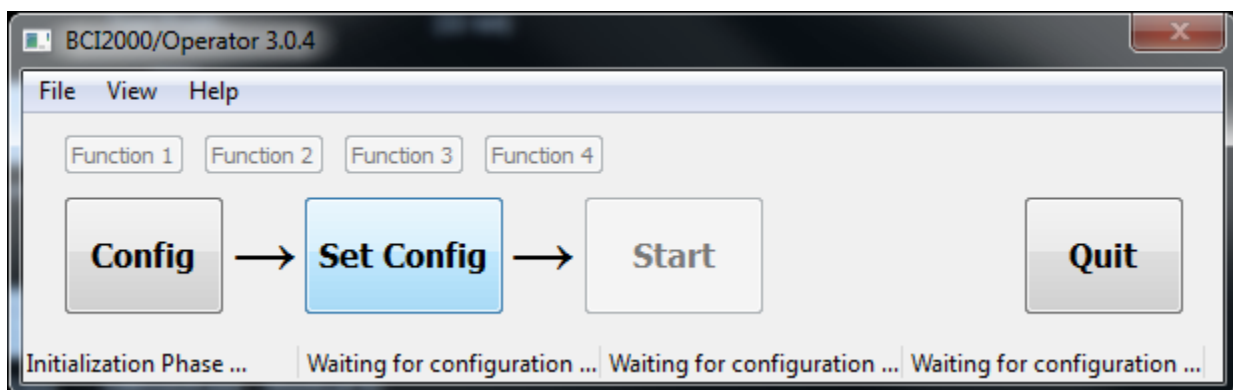
5. Click on **Config**



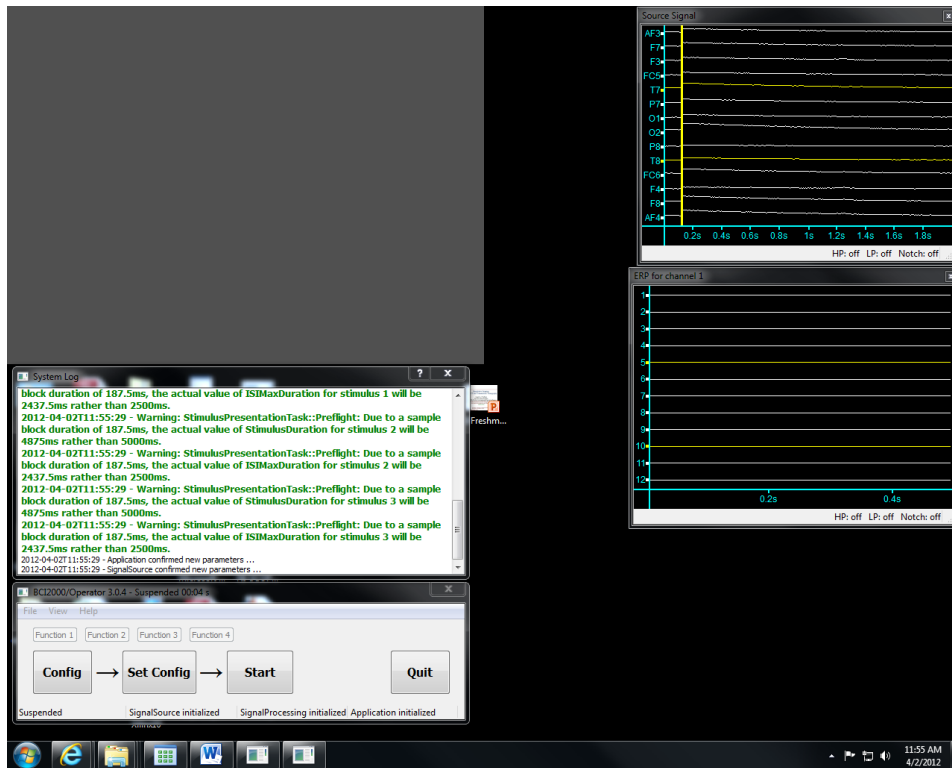
6. Click **Load Parameters ...**



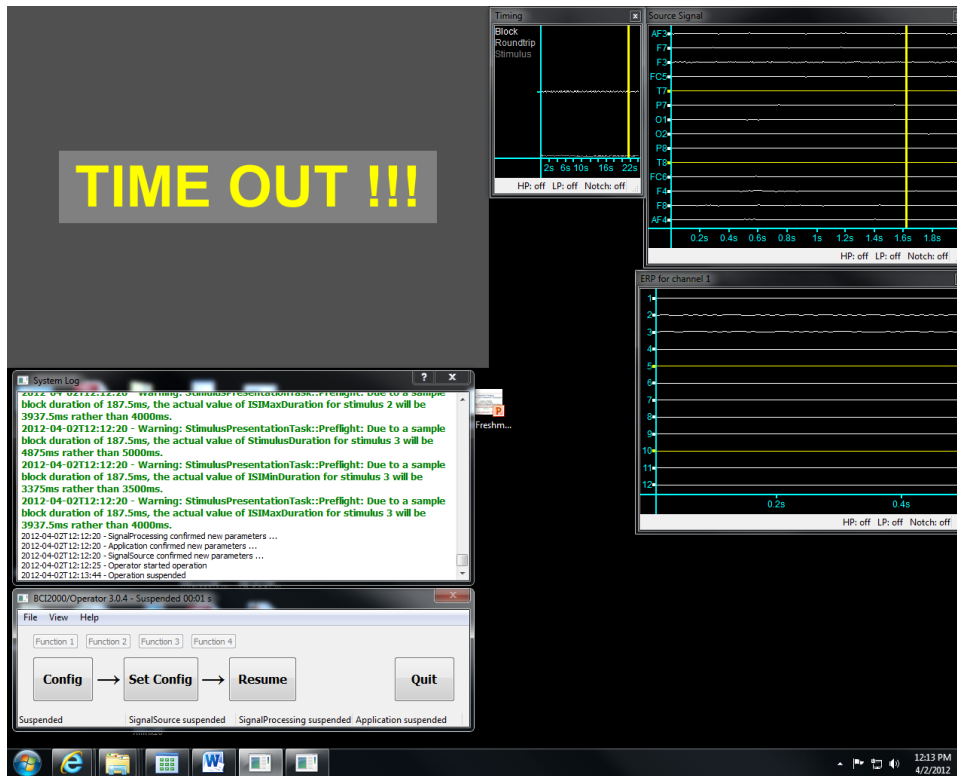
7. Select ESE297_stimpresentation.prm and click **Open** and then click **Close**.



8. Click **Set Config**.



9. Rearrange the windows so you can see the gray window and click **Start** when you are ready.
10. Clench right or left hand when the appropriate arrow appears and clear your mind when it says Pause – No Sleeping or Blinking. When the gray screen appears you can relax for 3.5 seconds.



11. Screen will say **Time Out** after 15 minutes. Click on **Quit** to close the program.
12. The data is automatically save to C:\temp\ESE297001. The file format is ESE297S001R<##>.dat where ## is the latest data which should be yours. Copy this file to your home directory for later Offline Analysis.
13. Please put everything NEATLY back in the box and back into the locker.

Installation Instructions

1. Get BCI2000 account
2. Download BCI2000 and install to \\bry316*\c:\BCI2000
3. Copy from BCI2000-Modified to C:\BCI2000:

C:\BCI2000\parms\ESE297_stimpresentation.prm

C:\BCI2000\prog\images\Pause.bmp

C:\BCI2000\batch\IpsiHand_StimPresentation.bat