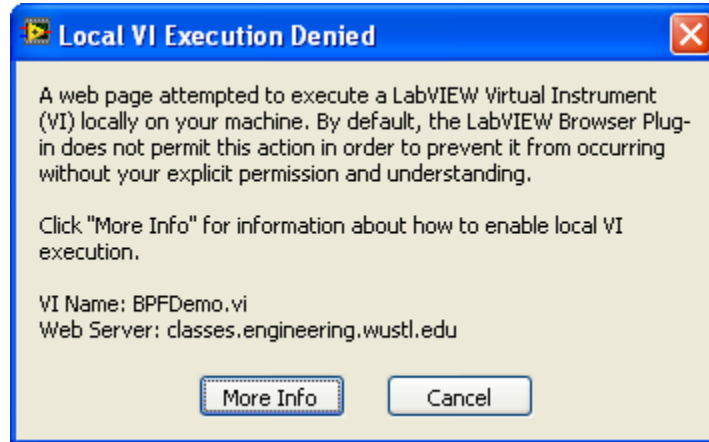
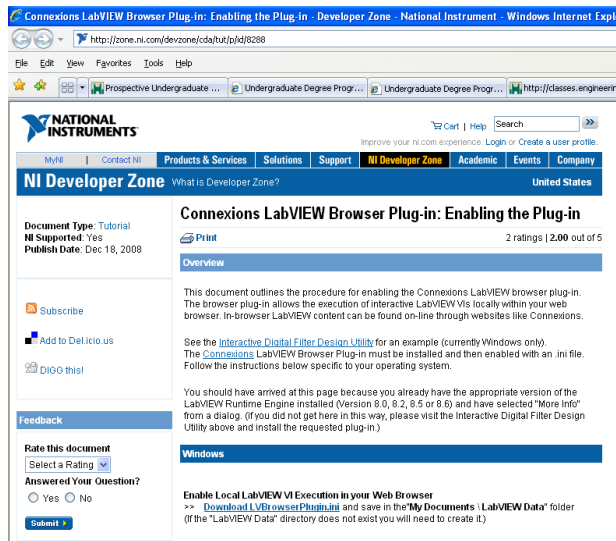


Installing the LabVIEW Run-Time Engine

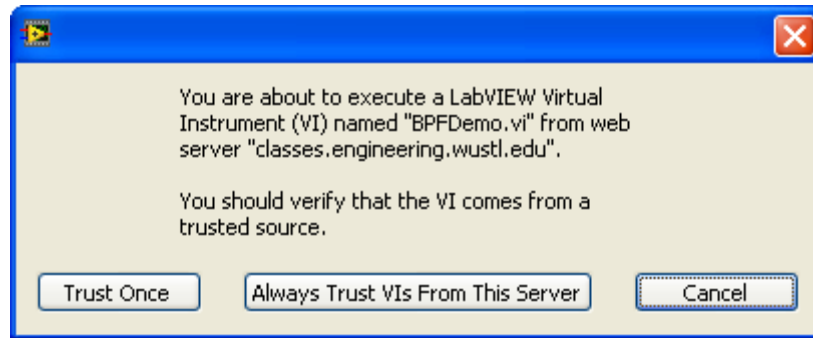
1. Open web page containing the LabVIEW program in Internet Explorer.
2. On the CEC computers:



- a. The Run-Time engines are already installed. However, you must still enable local VI execution. So, hit cancel when you get the message:
- b. Browse to: <http://zone.ni.com/devzone/cda/tut/p/id/8288>

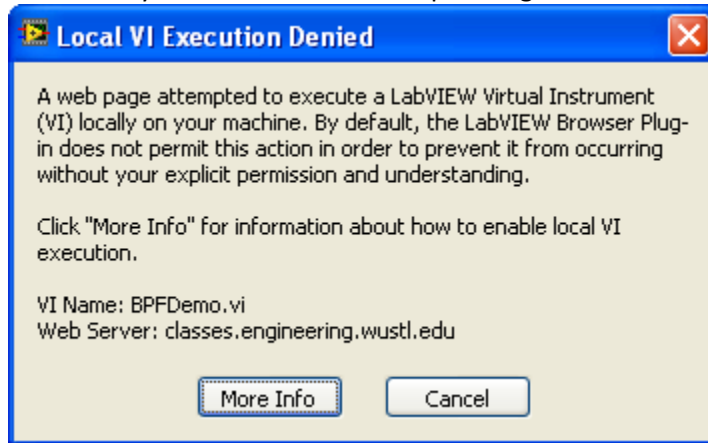


- c. Click on "Download LVBrowserPlugin.ini" and save this file to
My Documents\LabVIEW Data
Create the folder if it doesn't exist..



- d. Reload the page. Select "Trust Once" or "Always Trust VIs From This Server" and the web page should appear. Click on the arrow to run the program.

3. On a non-CEC computer
 - a. Make sure you have administrator privileges.



- b. Click on More Info.
- c. Wait for the message saying that "This website wants to install the following add-on:'LVRTE86std.exe'..."
- d. Click on the message
- e. Select Install ActiveX control...
- f. Accept any prompts from IE requesting to install the ActiveX control
- g. Hit ok when informed about the installer downloading files to the hard drive
- h. Unzip the archive
- i. Install the Run-Time
- j. Restart the computer
- k. Return to the website