

Using SSH to Access Class Web Sites

Download the SSH client: <http://engineering.wustl.edu/eit/ssh.aspx>

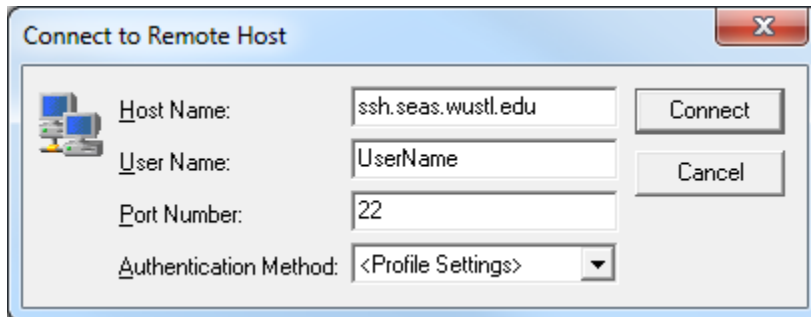
Select the "Install a SSH Client on your computer".

Install it using the default options

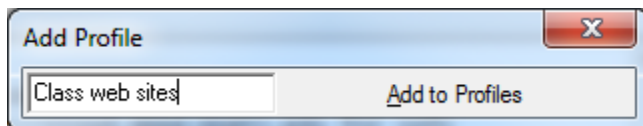
After installing double click the icon labeled SSH Secure Shell Client.

Select **Quick Connect**. The first time you use SSH to access a computer an information window pops up asking if you want to save a host key, select **Yes**.

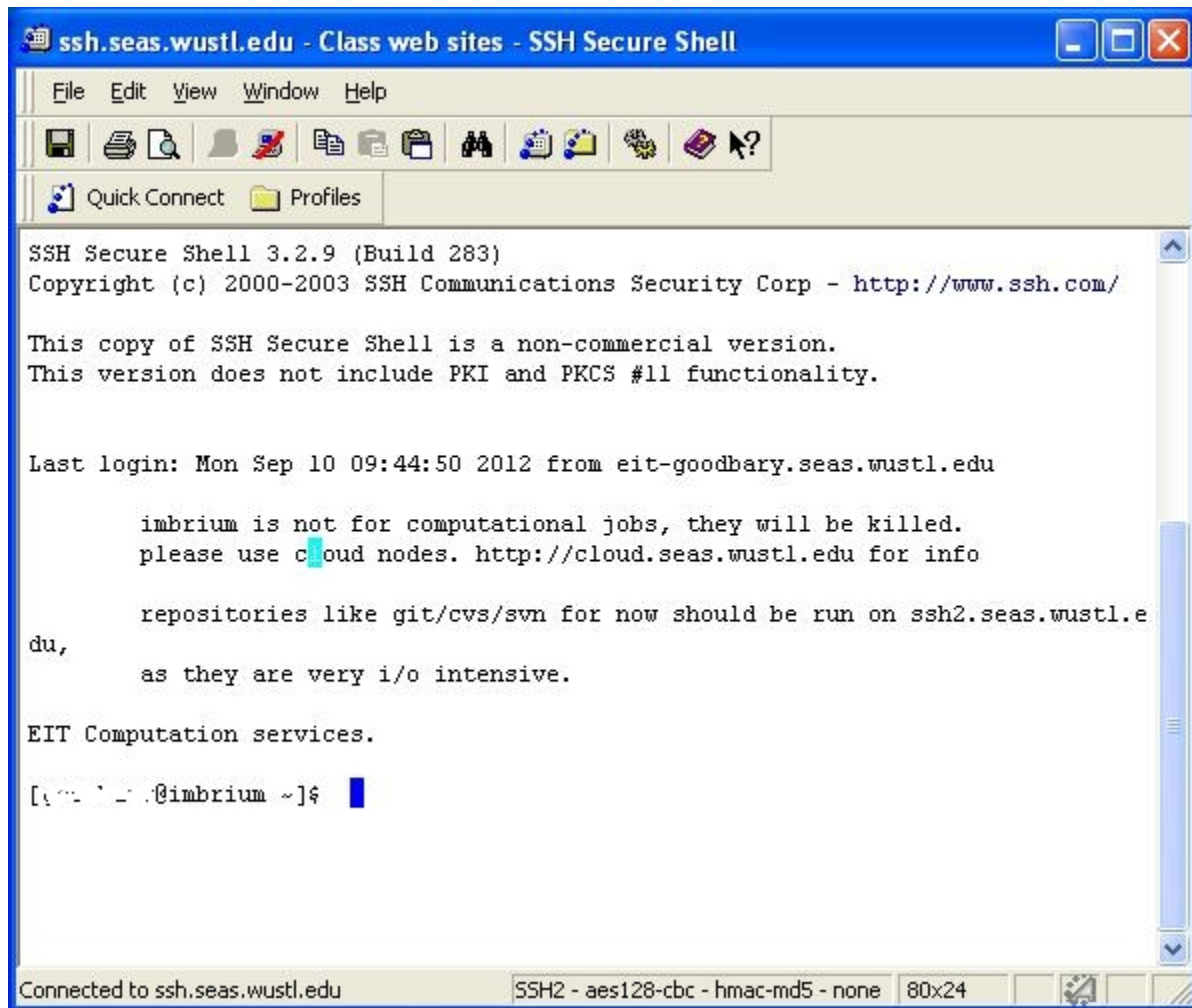
Enter your @seas email id for User Name. When prompted enter your @seas password (the same one you use to access your @seas email account).



When the box below appears I suggest that you enter "Class web sites", but you can name the profile anything you would like. Select **Add to Profiles**



Next click the **Profiles** icon and select **Edit Profiles**



Make sure that the profile you named is highlighted and select the **Favorite Folders** In the text box for **Home Folder** enter the path shown replacing these values:

Year: The current academic year

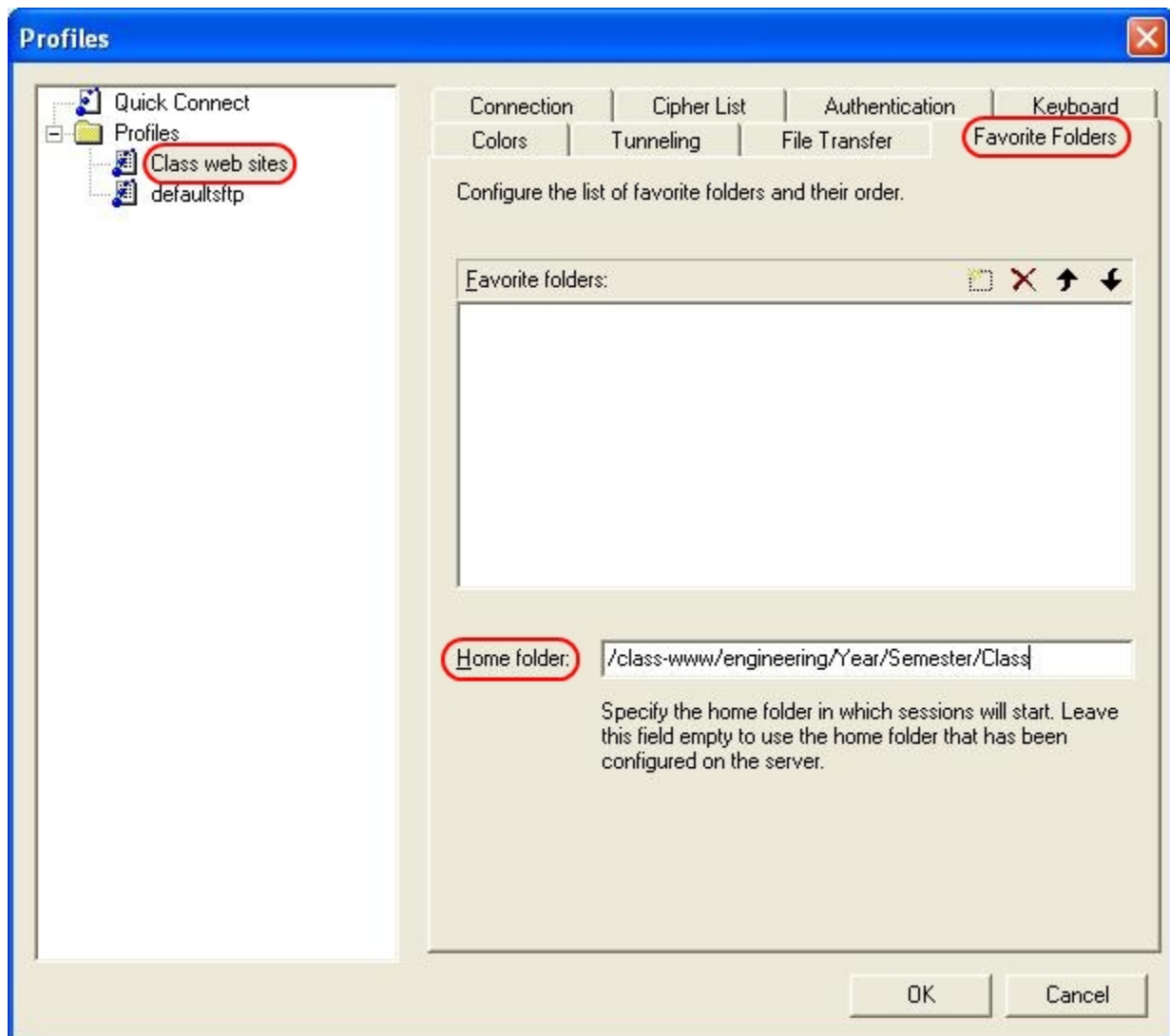
Semester: the current semester

Class: The class name

An example would be /class-www/engineering/2012/fall/jee1010

Select Ok to save your changes

The next time you start SSH click on Profiles and select the profile you created



Modifying the Class Web Site

After logging on the class web server using SSH click the yellow folder with the blue dots on it. The files on the left side of the screen are files on your computer. The files on the right side of the screen are files stored on the Class Web Server. To copy a file from your computer to the class web site just drag it from the left side of the screen to the right side.

